



F&F Filipowski sp. j.
ul. Konstytucyjna 79/81
95-200 Pabianice, POLAND
tel/fax 48 42 2270974
e-mail: fif@fif.com.pl

PO-415 230V TIMING RELAYS lagged-pulse time relays



www.fif.com.pl

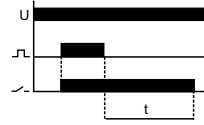
F&F products are covered by an 24 months warranty from date of purchase

PURPOSE

Lagged-pulse time relay P0-415 230V is devised to support the power supply of the controlled receiver for a specified period of time after decay of the control voltage, e.g. in bathroom ventilation systems in which the upkeep of the fan operation (activated along with the lighting) is required for a specified period of time after turning off the accompanying lighting.

FUNCTIONING

Supply of relay is signaling by shine of green LED. The application of control voltage to input 6 of the relay causes its connect of joint 11-12 (red LED is shine). After decay of the control voltage, the joint stay in position 11-12 by time t (set by potentiometer). After the t time, has been returned to position 11-10. If control voltage is re-supplied before the lapse of the preset time, the relay will repeat its operational sequence.



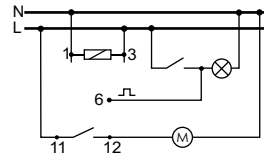
ASSEMBLY

1. Take OFF the power.
2. Put on the relay on the rail in the switchgearbox.
3. Connect the cobel of power with wiring diagram.
4. To input 6 connect cable with control voltage.
5. The system with receiver connect in line to joints 11-12.
6. By knob set activation time.

TECHNICAL DATA

supply	230VAC
current load	<16A
joint	1P
activation time	1÷15min
power supply indicator	green LED
operation mode indicator	red LED
power consumption	0,8W
working temperature	-25÷50°C
connection	screw terminals 2,5mm ²
dimensions	1 module (18mm)
fixing	rail TH-35

WIRING DIAGRAM



A090609