



ul. Konstytucyjna 79/81
95-200 Pabianice
tel/fax 48 42 2270971 POLAND
e-mail: fif@fif.com.pl

RT-821 TEMPERATURE REGULATOR

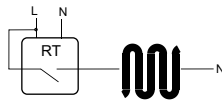


www.fif.com.pl

F&F products are covered by an 24 months warranty from date of purchase

PURPOSE

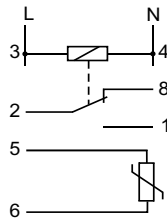
Temperature regulators may be used for equipment control in anti-freeze systems which prevent the freezing of gutters, the accumulation of ice on stairs, vehicles, etc.



TECHNICAL DATA

| | |
|---------------------------------|------------------------------------|
| supply | 230V AC |
| current load | <16A |
| joint | separated 1P |
| range of regulation temperature | -4+5°C |
| hysteresis setting range | 0,5+3°C |
| temperature sensor | KTY 10-6 |
| length of probe cable | 2,5m |
| supply signalisation | LED Green |
| operation mode | LED Red |
| power consumption | 1,1W |
| working temperature | -20+50°C |
| terminal | screw terminals 2,5mm ² |
| dimensions | 2 modules (35mm) |
| fixing | on rail TH-35 |

WIRING DIAGRAM



FUNCTIONING

The power supply to the generator is signalize by shine of green LED. Until the required ambient temperature is achieved, the contact of the regulator remains in position 2-1 and the heating device is active. Once the set value is achieved, the contact shifts into position 2-8 and the heating or ventilation device is turned off. Any drop in temperature by the hysteresis value will activate the heating device again (contacts 2-1 closed) until the set temperature value is achieved.

ASSEMBLY

1. Take OFF the power.
2. Put regulator on the rail in the switchgearbox
3. Connect to system with wiring diagram.
4. Probe of temperature put in the measurement place and connect to regulator. Need to care for heating or cooling device near place where is install probe. When is need, possible is continue probe cable to 10m. But when length of cable is longer than 10m than will arrive errors in work of relay.
5. By potentiometer "temperature" set ordered temperature value.
6. By potentiometer "hysteresis" set ordered hysteresis