

# *i*View HMI - *i*<sup>3</sup> Communication Tutorial

---



HMI solutions **you can view**

# Table Of Contents

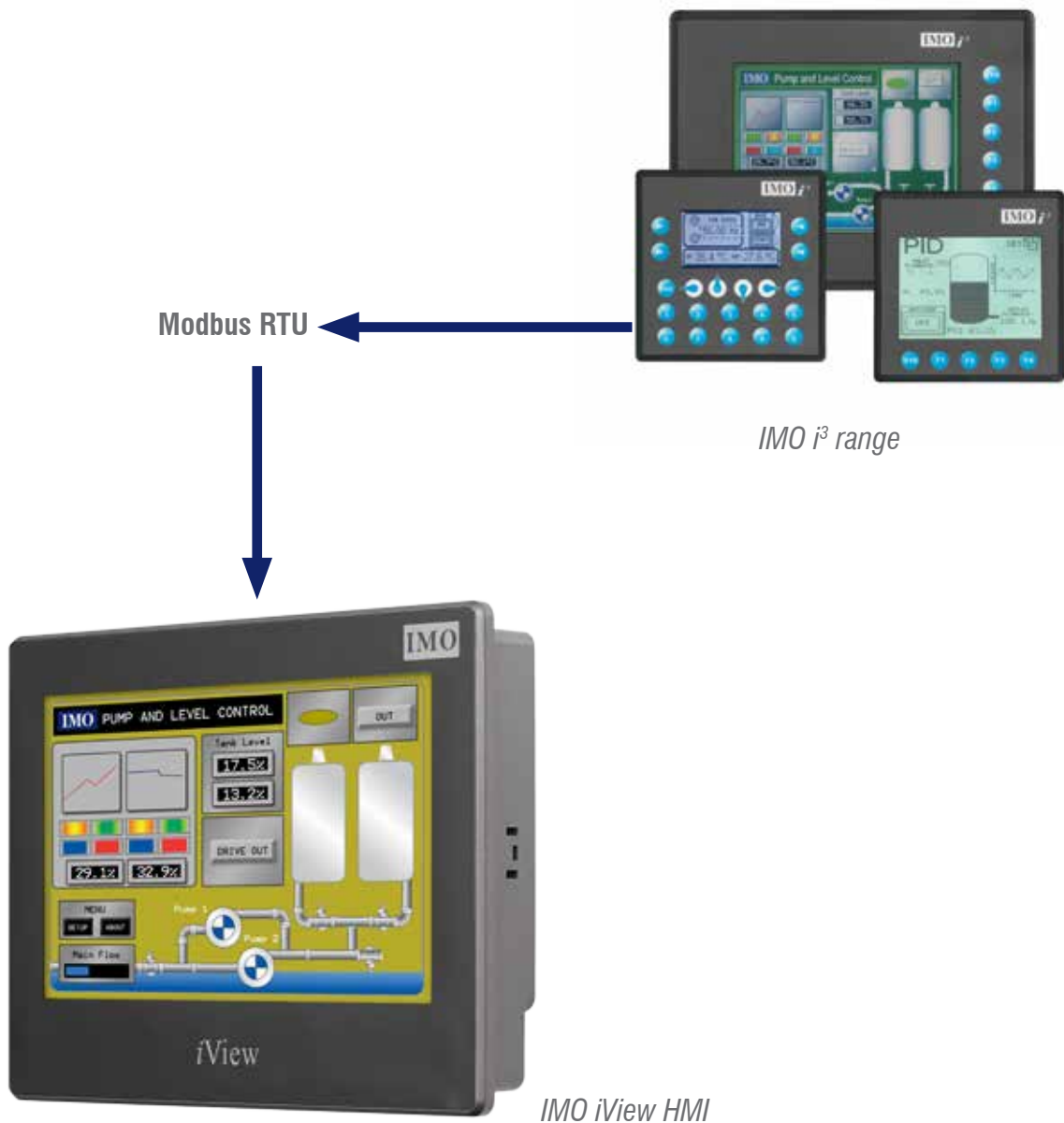
---

INTRODUCTION.....	3
IVIEW DEVELOPER SOFTWARE.....	4
I3 CONFIGURATOR SOFTWARE.....	6
WIRING.....	8
NOTES.....	9

Information in this document is subject to change without notice and does not represent a commitment on the part of IMO Precision Controls Ltd.

# Introduction

The iView HMI and i3 controller can be connected together over the Modbus RTU protocol. The settings required for the setup in both controllers are explained in the following chapters.



# iView Developer Software

Open the Project Manager under View > Project Manager

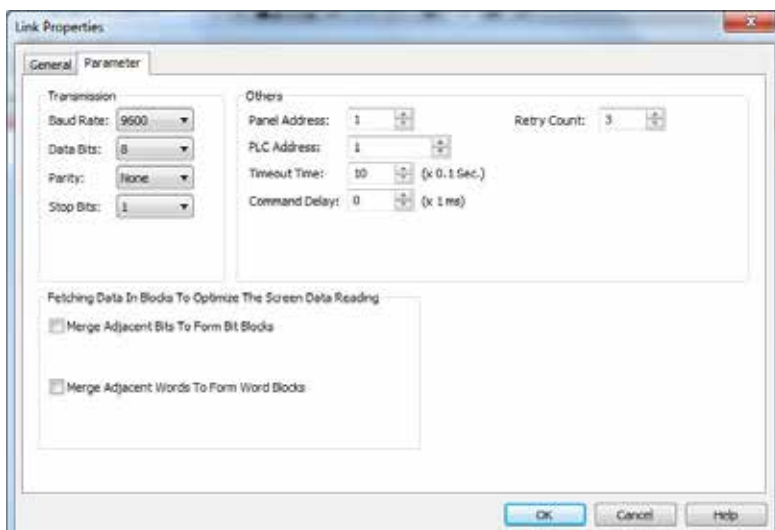
In the Project Manager > Open the Application Program Section (AP\_1) > Links. Right Click Links > Add Link.

Configure the link table as below.

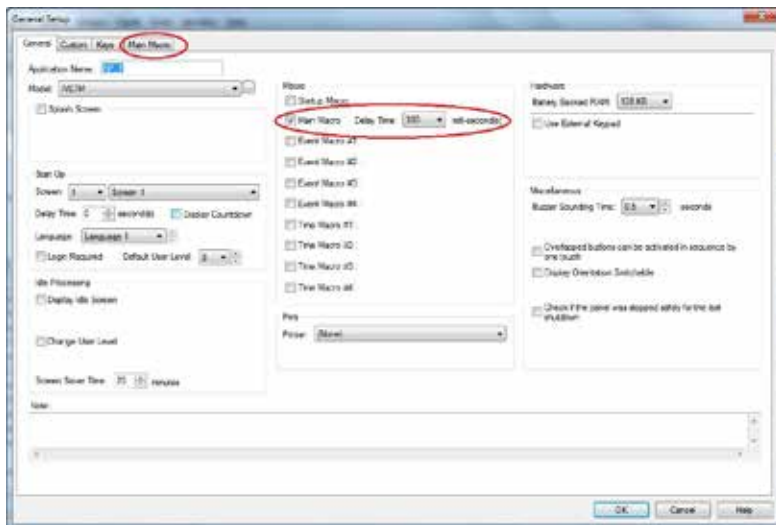
## General



## Parameter



Now Expand the following, Setup > General Setup



Open the Main Macro to run a simple script to read and write registers between the i3 and iView.

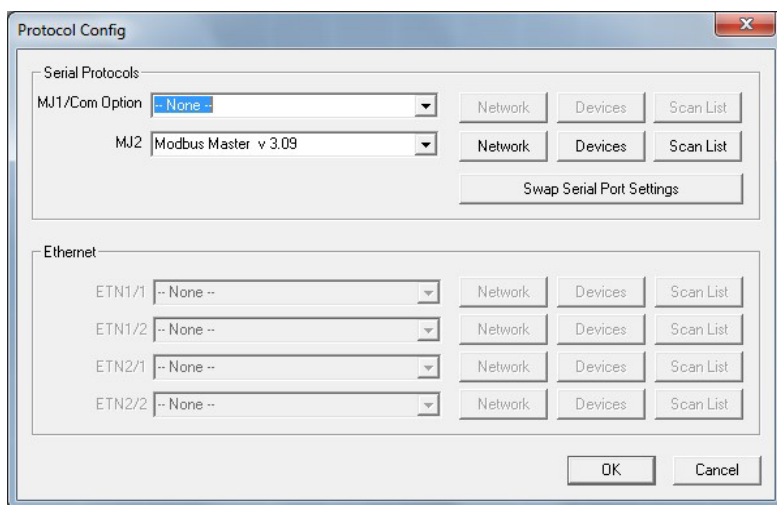
Macro name:

0	<code>1\40001=mov (\$u0,5)</code>
1	<code>\$u5=mov (1\40006,5)</code>
2	

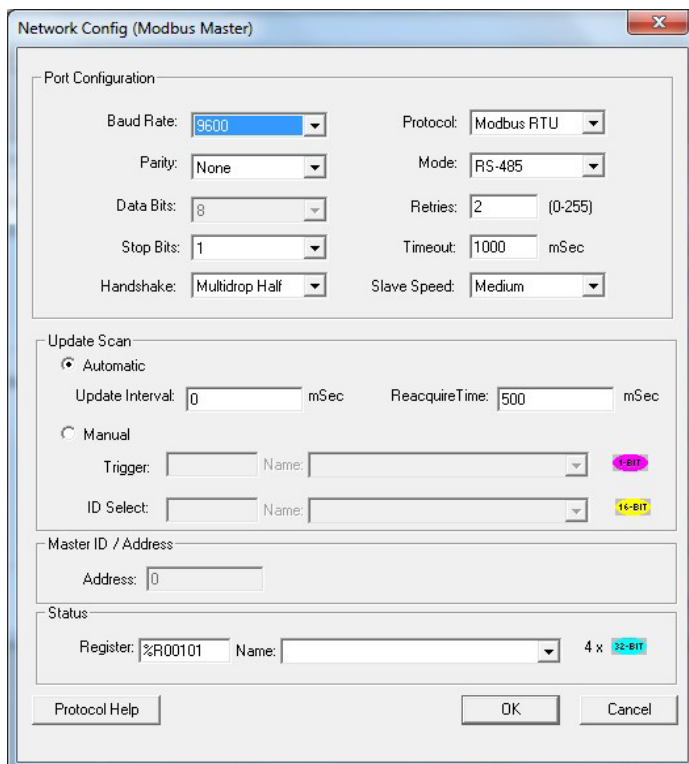
# i<sup>3</sup> Configurator Software

Open the Program > Protocol Configuration. Select the Modbus Master Protocol in the MJ2 and configure the Network, Devices and Scan list as shown below.

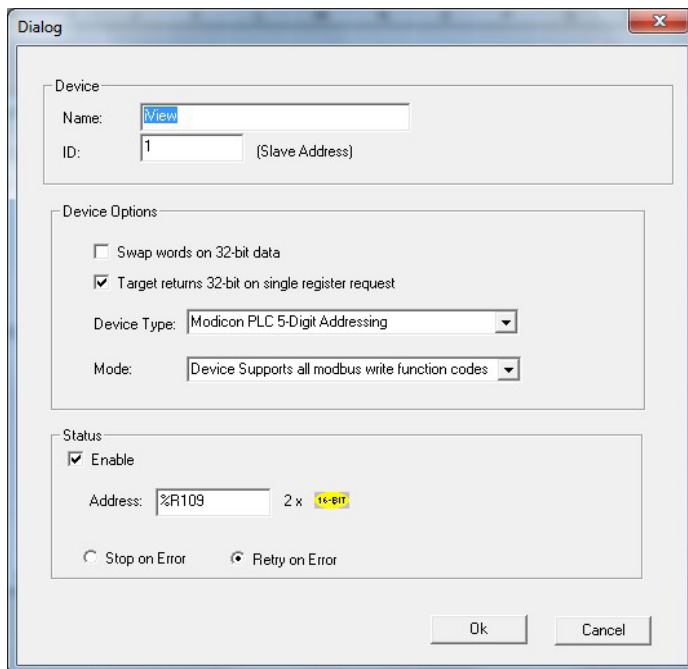
## Protocol Configuration



## Network



## Devices



Dialog

Device

Name:

ID:  (Slave Address)

Device Options

Swap words on 32-bit data

Target returns 32-bit on single register request

Device Type:

Mode:

Status

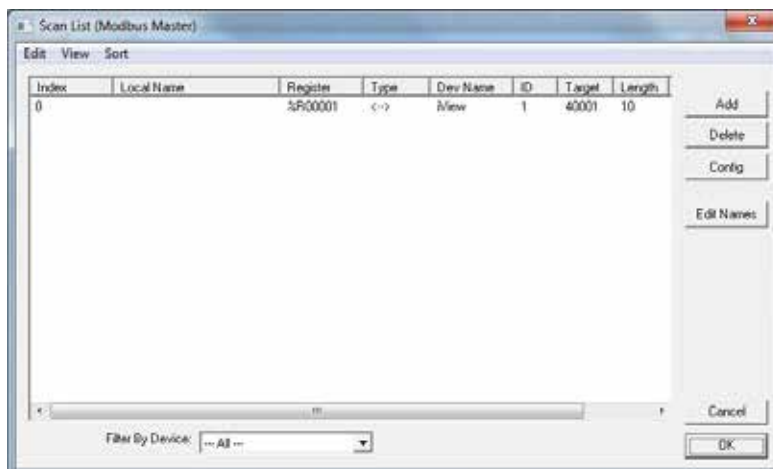
Enable

Address:  2 x

Stop on Error  Retry on Error

Ok Cancel

## Scan List



Scan List (Modbus Master)

Edit View Sort

Index	Local Name	Register	Type	Dev Name	ID	Target	Length
0		%R0001	<->	iView	1	40001	10

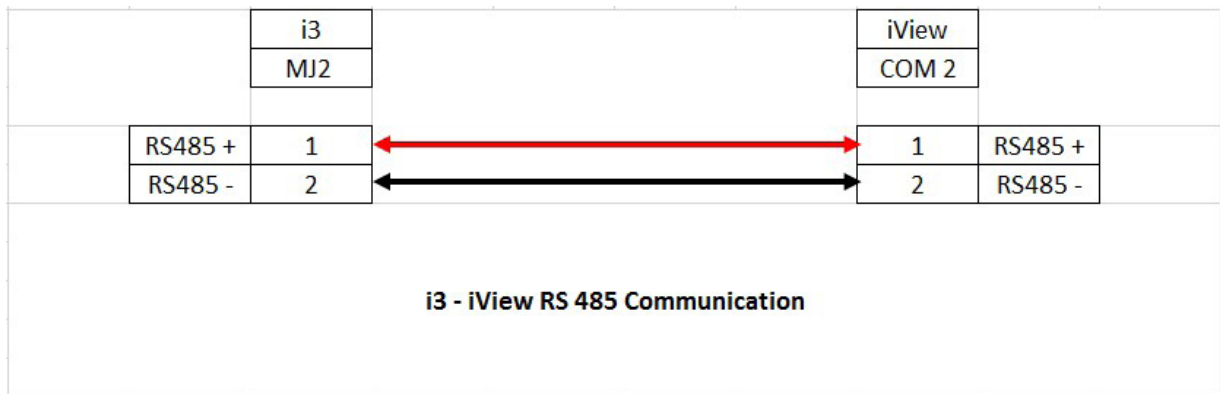
Add  
Delete  
Config  
Edit Names  
Cancel  
OK

Filter By Device:

## Attached Programs

iView Program - iV i3.pm3  
i3 Program - iV i3.csp

# Wiring





# Notes

---

## IMO Worldwide Offices

---

### **IMO Precision Controls Limited**

1000 North Circular Road  
Staples Corner  
London NW2 7JP  
United Kingdom

Tel: 020 8452 6444  
Fax: 020 8450 2274  
Email: [sales@imopc.com](mailto:sales@imopc.com)  
Web: [www.imopc.com](http://www.imopc.com)

### **IMO Automazione**

Via Ponte alle Mosse, 61  
50144 Firenze (FI)  
Italia

Tel: 800 930 872 (toll free)  
Fax: 8000 452 6445  
Email: [sales@imopc.com](mailto:sales@imopc.com)  
Web: [www.imopc.it](http://www.imopc.it)

### **IMO Russia**

Office N° 4063  
9, Zemlyanoy Val, 105064  
Moscow  
Russia

Tel: 8 800 100 8540 (toll free)  
Fax: 8 800 100 8541  
Email: [sales@imopc.com](mailto:sales@imopc.com)  
Web: [www.imopc.com](http://www.imopc.com)

### **IMO Jeambrun Automation SAS**

Centre D'Affaires Rocroy  
30, Rue de Rocroy  
94100 Saint-Maur-Des-Fosses  
France

Tel: 0800 912 712 (toll free)  
Fax: 0145 134 737  
Email: [sales@imopc.com](mailto:sales@imopc.com)  
Web: [www.imojeambrun.fr](http://www.imojeambrun.fr)

### **IMO Canada**

Unit 32 - B - North  
18 Stratheam Avenue, Brampton  
Ontario L6T 4Y2  
Canada

Tel: 905 799 9237 (local)  
Fax: 905 799 0450  
Email: [sales@imopc.com](mailto:sales@imopc.com)  
Web: [www.imopc.com](http://www.imopc.com)

### **IMO Pacific Pty Ltd**

1/34 Fallon Road  
Landsdale  
Perth WA 6065  
Australia

Tel: 08 9302 5246 (local)  
Fax: 08 9303 9908  
Email: [sales@imopacific.com.au](mailto:sales@imopacific.com.au)  
Web: [www.imopacific.com.au](http://www.imopacific.com.au)