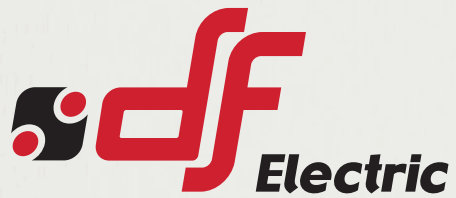


# PHOTOVOLTAIC

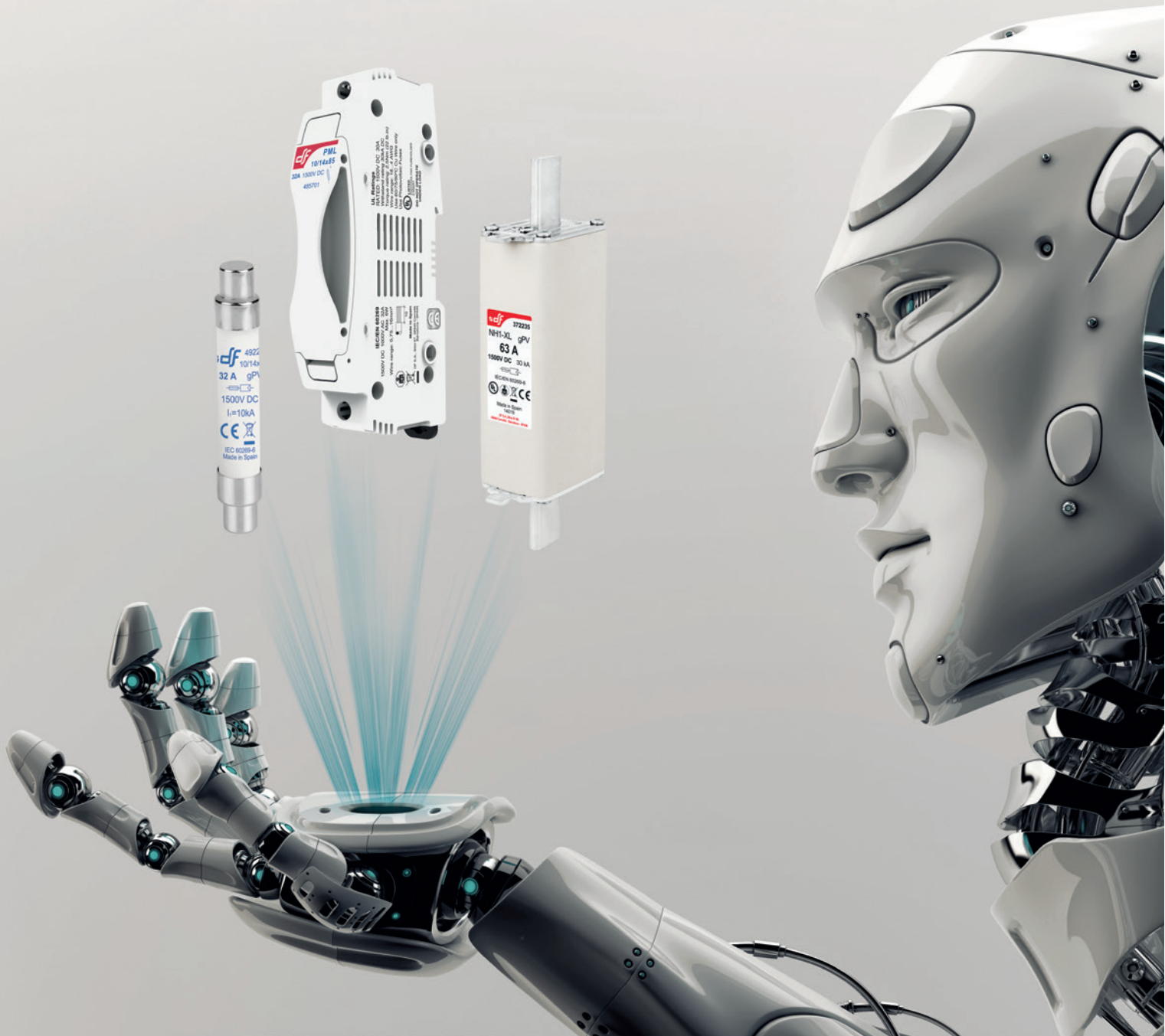
QUICK GUIDE

FUSE-LINKS & FUSE HOLDERS FOR PHOTOVOLTAIC APPLICATIONS



# PROTECTING THE WORLD

Our vision for the future is to achieve a leadership position in manufacturing and marketing of our products, strengthening our presence around the world and building ourselves up as an organisation that incorporates the values of a large modern company managing resources with efficacy and efficiency.





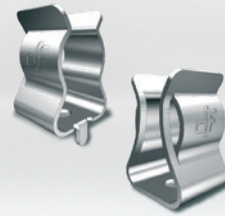
**CYL** | **gPV**  
CYLINDRICAL  
fuse links

	10x38	14x51	10x85	10/14x85
U	1000V DC	1000V DC 1100V DC	1200V DC 1500V DC	1500V DC
In	1A...20A	25A   32A 15A   20A	20A   25A 2A...16A	20A...32A
BREAKING CAPACITY	30kA	30kA 10kA	10kA 30kA	10kA
STANDARDS	UL		UL	



**Ø10**  
CLIP CONTACT  
CYLINDRICAL  
Ø10 fuse links

	PCB	SCREW
U	UP TO 1500V AC/DC	
In	25A	



**PMX** | **PMX**  
CYLINDRICAL  
fuse holders

**PATENTED DESIGN**

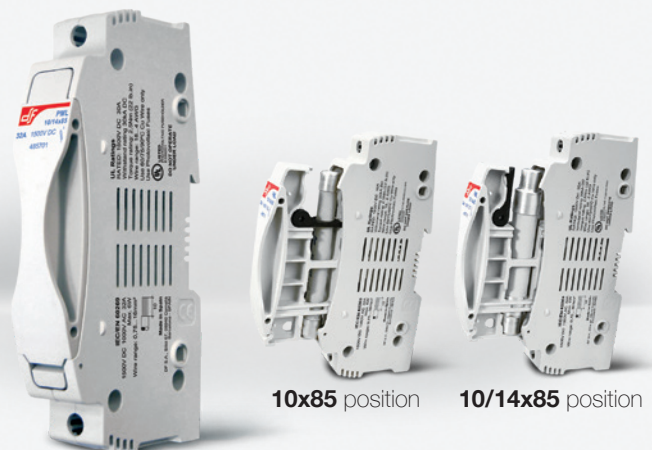
	10x38	14x51
U	1000V DC	1100V DC
In	32A	50A
STANDARDS	UL SF	



**PML** | **PML**  
CYLINDRICAL  
fuse holders

**PATENTED DESIGN**

	10x85	10/14x85
U	1500V DC	
In	32A	
STANDARDS	UL	



10x85 position

10/14x85 position



## gPV NH 1000V DC fuse links



U	1000V DC	1000V DC	1000V DC
In	25A...125A 160A   200A*	200A   250A	200A 250...400A*
BREAKING CAPACITY	30kA	30kA	30kA
STANDARDS **			

\* UL PENDING

\*\* ONLY STANDARD BLADE  
BOLTED BLADE UL PENDING



## gPV NH XL 1500V DC fuse links



U	1500V DC	1500V DC	1500V DC
In	40A...63A 80...200A	200A   250A	315A...400A
BREAKING CAPACITY	30kA	30kA	30kA
STANDARDS *			

\* NH1XL 200A NOT UL



## gG / gL NH 800V AC fuse links



U	800V AC	800V AC	800V AC
In	25A...63A	80A...160A	200A...315A
BREAKING CAPACITY	80kA	80kA	80kA







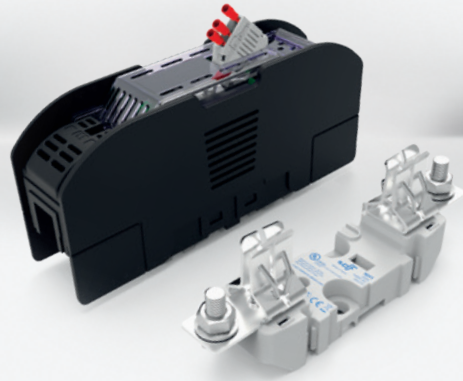
**ST**  
NH 1000V DC  
fuse bases



U 1000V DC 1000V DC 1000V DC

I<sub>n</sub> 250A 400A 500A

STANDARDS



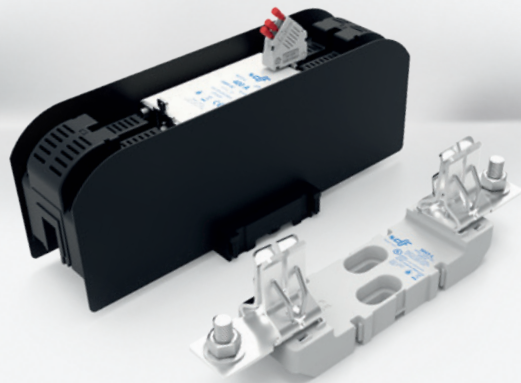
**ST**  
NH XL 1500V DC  
fuse bases



U 1500V DC 1500V DC 1500V DC

I<sub>n</sub> 200A 315A 500A

STANDARDS

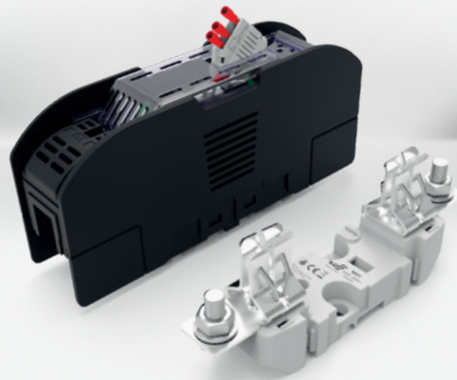


**ST**  
NH 800V AC  
fuse bases



U 800V AC 800V AC

I<sub>n</sub> 200A 630A



**accessories**  
NH



MICROSWITCH

FUSE PULLER ST

FUSE PULLER XL

U	1000V DC	•	•	-
	1500V DC	•	-	-
	800V AC	•	•	-



**HEAD OFFICE AND FACTORY**

SILICI, 67-69  
08940 CORNELLA DE LLOBREGAT  
BARCELONA  
SPAIN  
Tel. +34 93 377 85 85  
Fax +34 93 377 82 82

**INTERNATIONAL SALES**

Tel. +34 93 475 08 64  
Fax +34 93 480 07 75  
export@df-sa.es

**NATIONAL SALES**

Tel. 93 475 08 64  
Fax 93 480 07 76  
comercial@df-sa.es

[www.df-sa.es](http://www.df-sa.es)



**PROTECTING  
THE WORLD**

