

# Electronic Timers

## TA8-A / TA8-SA / TA8-DA / TA8-TA

### On Delay Timer TA8-A / TA8-SA

New short body on-delay timers, with 16 ranges selectable from front panel. Plug-in or panel mounting.



- Timing ranges 0.05 secs to 60 hours
- 16 ranges, front panel selectable
- DPCO timed contacts or SPCO timed plus SPCO instantaneous contact versions
- New scale ranges for ease of time setting
- Instantaneous output with dial set at 0
- Improved resistance to electromagnetic interference
- Indicators for time range, time up and power on/timing
- 48-DIN
- Plug-in octal base
- Sockets available for panel, surface or DIN rail mounting
- UL Approved



### Options & Ordering Codes

DPCO	TA8-A	SPCO	TA8-SA	TA8-DA	TA8-TA
Timed Contacts	24VAC/DC 100-240VAC 48-127VDC	Timed Contacts plus Instantaneous Contacts	24VAC/DC 100-240VAC 48-127VDC	24VAC/DC 100-240VAC 48-127VDC	24VAC/DC 100-240VAC
	<b>Voltage</b>		<b>Voltage</b>	<b>Voltage</b>	<b>Voltage</b>

### Technical Specification TA8-A / TA8-SA

Timing Ranges (Selectable)	Calibrated range - selected using screw in bottom left corner of the front panel	Controlled timing range. Time unit selectable using the screw in the bottom right hand corner of the front panel			
		Time unit: 0.1 sec.	Time unit: sec.	Time unit: min.	Time unit: hrs
0 - 6	0 - 6	0.05 - 0.6 secs.	0.5 - 6.0 secs.	0.5 - 6.0 mins.	0.5 - 6.0 hrs.
0 - 12	0 - 12	0.1 - 1.2 secs.	1.0 - 12.0 secs.	1.0 - 12.0 mins.	1.0 - 12.0 hrs.
0 - 30	0 - 30	0.25 - 3.0 secs.	2.5 - 30.0 secs.	2.5 - 30.0 mins.	2.5 - 30.0 hrs.
0 - 60	0 - 60	0.5 - 6.0 secs.	5.0 - 60.0 secs.	5.0 - 60.0 mins.	5.0 - 60.0 hrs.

Repeat Accuracy	±0.3% at max. setting time
Reset Time	0.1 sec or less
Max. Switching Frequency	1800 times/hour
Allowable Ambient Temperature	-10°C to +55°C (Avoid ice on timer)
Mechanical Life	20 million operations or more
Electrical Life	100,000 operations or more at 250 V AC 5A resistive load
Allowable Operating Voltage Range	0.85 to 1.1 times input voltage (0.9 to 1.1 at 55°C)
Contact Ratings	5A at 250 V AC resistive load
Power Consumption	10VA at AC, 1W at DC

Supply Frequency AC Types	50/60 Hz
Dielectric Strength	2,000 V AC rms. 1 min. between current carrying part and non current carrying part
	2,000 V AC rms. 1 min. between output contacts and control circuit
	1,000 V AC rms. 1 min. between open contacts
Insulation Resistance	100 MΩ or more at 500 V DC megger
Vibration	Mechanical durability: 10 to 55Hz, 0.75mm double amplitude
	Malfuction durability: 10 to 55Hz, 0.5mm double amplitude
Shock	Mechanical durability: 500m/s <sup>2</sup> (Approx. 50G)
	Malfuction durability: 100m/s <sup>2</sup> (Approx. 10G)

# Electronic Timers

## TA8-A / TA8-SA / TA8-DA / TA8-TA

### Off Delay Timer TA8-DA

True off-delay timer with 4 ranges, selectable from the front panel. Plug-in or panel mounting.

- Timing ranges 3 secs to 12 mins
- 4 ranges, front panel selectable
- Indications for timing range and power on
- DPCO output relay
- 48-DIN
- Plug-in octal base
- Sockets available for panel, surface or rail mounting
- UL Approved



### Off Delay Timer TA8-TA

Multi-range timer with independent on and off times from 0.05 sec. to 60 hours each

- Timing ranges 0.05 sec to 60 hours
- 16 timing ranges, front panel selectable
- Indications for time range, output status and power on
- DPCO output relay
- Easy-set dual concentric knob
- Independent on/off time units
- 48-DIN
- Plug-in octal base
- Sockets available for panel, surface or rail mounting
- UL Approved



### Technical Specification

Timing Ranges (TA8-DA)	Timing Ranges	Time Setting Range
	0.6 mins.	0.5 to 0.6 mins.
	1.2 mins.	0.1 to 1.2 mins.
	6 mins.	0.5 to 6.0 mins.
	12 mins.	1.0 to 12 mins.

Timing Ranges (TA8-TA Selectable)	Calibrated timing range	Controlled timing range.			
		Time unit: 0.1 sec.	Time unit: sec.	Time unit: min.	Time unit: hrs
	0 - 6	0.05 - 0.6 secs.	0.5 - 6.0 secs.	0.5 - 6.0 mins.	0.5 - 6.0 hrs.
	0 - 12	0.1 - 1.2 secs.	1.0 - 12.0 secs.	1.0 - 12.0 mins.	1.0 - 12.0 hrs.
	0 - 30	0.25 - 3.0 secs.	2.5 - 30.0 secs.	2.5 - 30.0 mins.	2.5 - 30.0 hrs.
	0 - 60	0.5 - 6.0 secs.	5.0 - 60.0 secs.	5.0 - 60.0 mins.	5.0 - 60.0 hrs.

Model	TA8-DA	TA8-TA
Repeat Accuracy	±0.3% at max. setting time	
Max. Switching Frequency	1800 times/hour	
Allowable Ambient Temperature	-10°C to +55°C (Avoid ice on timer)	
Min. Power Application Time	2	-
Mechanical Life	10 million operations or more	20 million operations or more
Electrical Life	100,000 operations or more at 250 V AC 5A resistive load	
Allowable Operating Voltage Range	0.85 to 1.1 times input voltage (0.9 to 1.1 at 55°C)	
Contact Ratings	5A at 250 V AC resistive load	
Power Consumption	10VA at AC, 1W at DC	10VA at 240 V AC

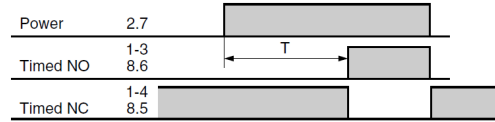
Supply Frequency AC Types	50/60 Hz
Dielectric Strength	2,000 V AC rms. 1 min. between current carrying part and non current carrying part
	2,000 V AC rms. 1 min. between output contacts and control circuit
	1,000 V AC rms. 1 min. between open contacts
Insulation Resistance	100 MΩ or more at 500 V DC megger
Vibration	Mechanical durability: 10 to 55Hz, 0.75mm double amplitude
	Malfuction durability: 10 to 55Hz, 0.5mm double amplitude
Shock	Mechanical durability: 500m/s <sup>2</sup> (Approx. 50G)
	Malfuction durability: 100m/s <sup>2</sup> (Approx. 10G)

# Electronic Timers

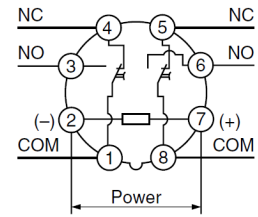
## TA8-A / TA8-SA / TA8-DA / TA8-TA

### Timing & Wiring Diagrams

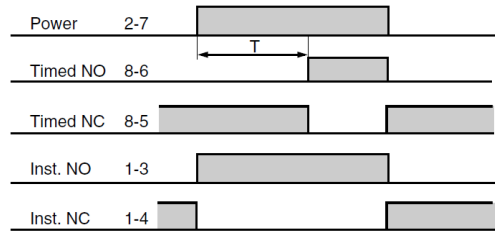
#### TA8-A



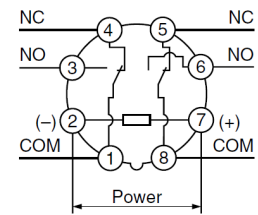
- When power is applied, the NO timed contacts make after the set time has elapsed.
- When power is removed the timer resets.



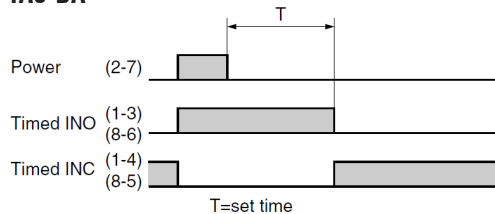
#### TA8-SA



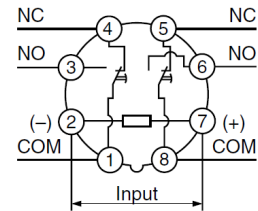
- Timed contact  
When power is applied, the NO contact makes after the set time has elapsed.  
When power is removed, the timer resets.
- Instantaneous contact  
When power is applied, the NO contact makes instantly.  
When power is removed, the timer resets.



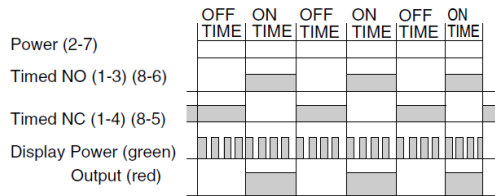
#### TA8-DA



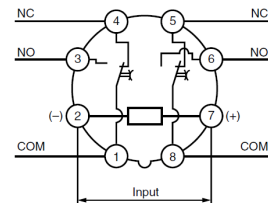
- When power (2-7) is ON, the NO timed contacts (1-3, 8-6) are instantly closed. When power is OFF, they are opened after the set time has elapsed.



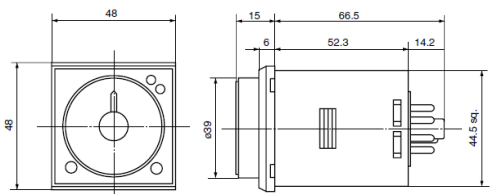
#### TA8-TA



- When power (2-7) is ON, the NO (1-3, 8-6) and the NC (1-4, 8-5) timed contacts are alternately closed to repeat the ON-OFF operations.
- When power is OFF the timer resets.

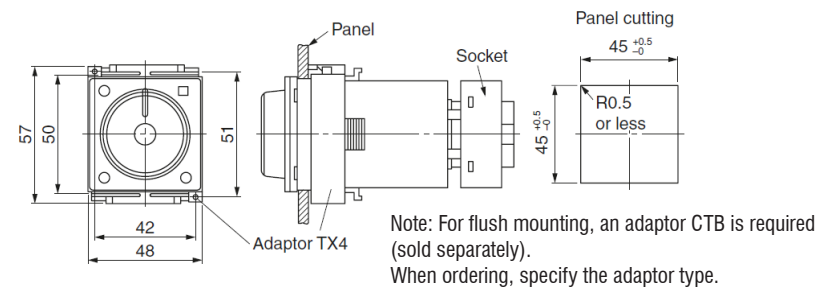


### Dimensions (mm)



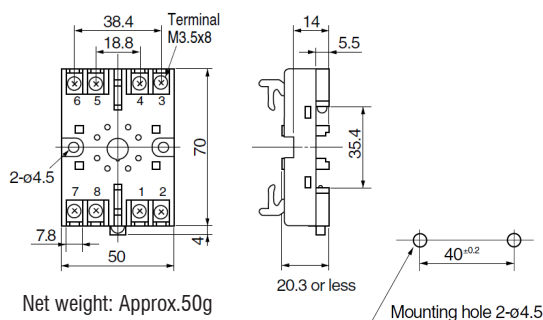
Net weight: Approx.100g

### Flush Mounting

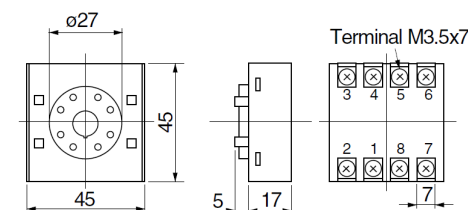


### Sockets

#### Surface / track mounting - screw terminal (STD-8)



#### Flush mounting - screw terminal (STF-8)



#### Flush mounting - solder terminal (ZSV8)

