

OJL busbar adapters are used for connecting OJL connectors to copper or aluminium busbars.
Materials: Tin plated copper

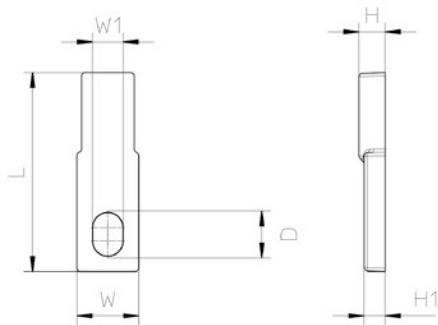


BA 200A

BA 280A

BA 400A

Grey	MAB1201EBA	MAB1281EBA	MAB1401EBA
------	------------	------------	------------



Technical data

D	9,8	13,8	13,8
H	5,95	7,25	9,75
H1	4,8	5	5,2
L	45	61	70
W	14	23	30
W1	6,8	10,8	10,8
Weight (g)	22	49	90
Package (pcs)	24	12	8

Distribution terminals MAG

Distribution terminals MAG 25 is designed to connect copper cables in the range of 2,5 to 25 mm².
Universal quick-mounting unit for horizontal and vertical mounting for 35 mm mounting rails. Contacts are made of MS 58, contact screws are made of zinc-plated steel. IP protection class for MAG 25 terminals is IP20.

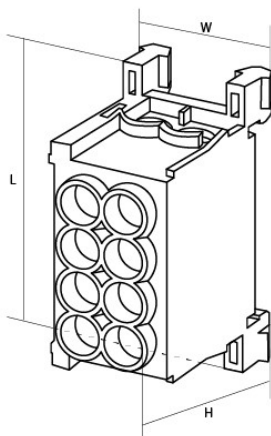


MAG 25-2 grey

MAG 25-2 blue

MAG 25-2 green

Grey	●	MAG1250A32	-	-
Blue	●	-	MAG1250B32	-
Green	●	-	-	MAG1250G32



Technical data

Conductor cross-section CU (mm ²)	4 x 2,5 - 25	4 x 2,5 - 25	4 x 2,5 - 25
Nominal voltage (V)	400	400	400
Nominal current (A)	80	80	80
Width / Length / Height (mm)	26 / 50,5 / 31,5	26 / 50,5 / 31,5	26 / 50,5 / 31,5
Screw	Pozidriv	Pozidriv	Pozidriv
Tightening torque (Nm)	2,5	2,5	2,5
Mounting	DIN rail	DIN rail	DIN rail
Weight (g)	60	60	60
Package (pcs)	4	4	4