

Universal connectors OTH

| Al/Cu

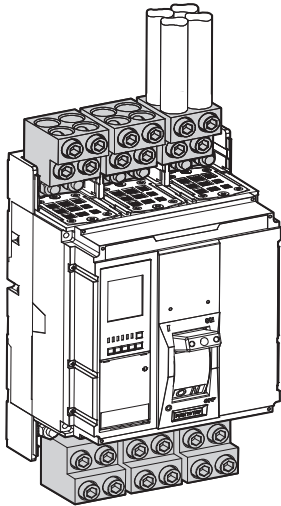
Up to
3x300 mm²



Universal connectors OTH are used to connect copper and aluminium wires to directly to switchgear devices. These OTH device connectors enable to connect two, three or four wires up to 300 mm² to a single connection point of a device without using cable lugs. Their compact economic design is characterized by small size and easy installation.



OTH 240-4



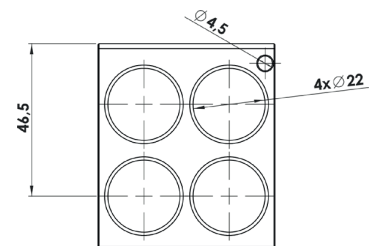
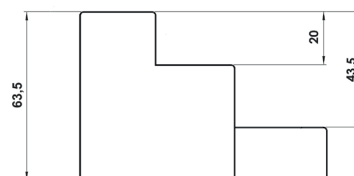
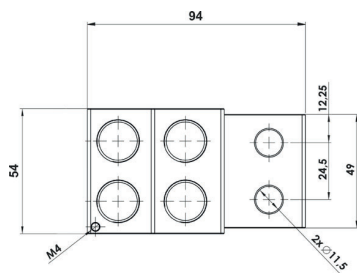
	MAC4240A15
Technical data	
Conductor cross-section Cu, Al (mm ²)	4 x 50 - 240 + 1 x 1,5 - 4
Nominal voltage (V)	1000
Nominal current (A)	1600
Width / Height / Length (mm)	54 / 63,5 / 94
Number of mounting holes	2
Diameter connecting hole (mm)	11,5
Screw, hexagonal key	No. 10
The length of the uninsulated conductor (mm)	25 / 55
Tightening torque (Nm)	45
Weight (g)	410
Package (pcs)	2

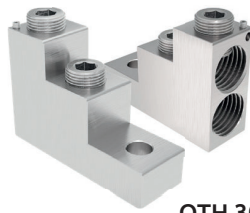
Compatibility

ABB Emax E 1.2 F up to 1600A, Tmax T7 F up to 1600A	Yes
ABB Tmax T6 F up to 1000A, Tmax T5 (XT5) up to 630A	No
Schneider NS630b up to 1600A	Yes
Schneider NSX400-630	No
Eaton NZML4-VE1250, NZM4-XKA up to 1250	Yes
Eaton NZMS2-4-VE250, NZMH3-4-VE630	No
Siemens 3VA66 1000A, 3VA271 1250-1600A	Yes
Siemens 3VA5 630A	No
LS TS630, TS800	No
Chint NM8N-1600A	Yes
Chint NM8N up to 630A	No

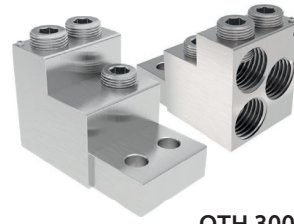
Dimensions

OTH 240-4





OTH 300-2



OTH 300-3

	MAC2300A14	MAC3300A14
--	------------	------------

Technical data		
Conductor cross-section Cu, Al (mm ²)	2 x 70 – 300 + 1 x 1,5 – 4	3 x 70 – 300 + 1 x 1,5 – 4
Nominal voltage (V)	1000	1000
Nominal current (A)	800	1250
Width / Height / Length (mm)	30 / 63,5 / 94	54 / 63,5 / 94
Number of mounting holes	1	2
Diameter connecting hole (mm)	12,5	11,5
Screw, hexagonal key	No. 10	No. 10
The length of the uninsulated conductor (mm)	27 / 56	27 / 56
Tightening torque (Nm)	45	45
Weight (g)	213	406
Package (pcs)	3	2

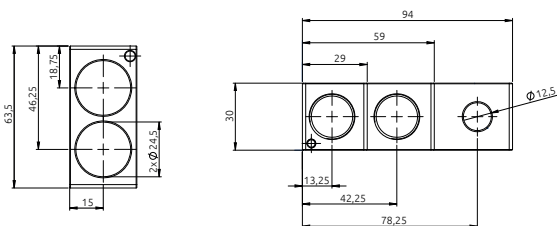
Compatibility		
ABB Emax E 1.2 F up to do 1600A, Tmax T7 F up to 1600A	Ne	Ano
ABB Tmax T6 F up to 1000A, Tmax T5 (XT5) up to 630A	Ano	Ne
Schneider NS630b up to 1600A	Ne	Ano
Schneider NSX400-630	Ano	Ne
Eaton NZML4-VE1250, NZM4-XKA up to 1250	Ne	Ano
Eaton NZMS2-4-VE250, NZMH3-4-VE630	Ano	Ne
Siemens 3VA66 1000A, 3VA271 1250-1600A	Ne	Ano
Siemens 3VA5 630A	Ano	Ne
LS TS630, TS800	Ano	Ne
Chint NM8N-1600A	Ne	Ano
Chint NM8N up to 630A	Ano	Ne

Contact us if you have further questions about compatibility!

NB! In order to use 300 mm² cables with OTH300 connectors, you need to use shorter screws. Please notify us about it during the purchase and we will supply the screws with your order.

Dimensions

OTH 300-2



OTH 300-3

