

Splitting cable entry plates

Splitting cable entry plates are compact system to route and seal pre-terminated cables

Insertion of
pre-terminated
cables

UL 94 V-0

Does
not affect
warranty
of pre-terminated cables



Splitting cable entry plate for cables with attached connectors

Often with the cables come the connectors and very often the connectors can not be removed and re-attached. The delicate data cables, HDMI's etc. are difficult or impossible to re-join at site. The splitting cable entry plate is the solution that lets the cables be installed with the connectors and on top of that the cables can be changed as often as wanted. Choose splitting cable entry plate for fast, safe and versatile installations.

Splitting cable entry plates SCG and MC are intended for leading through both low and medium power current cables, but also various kinds of tubing.

Splitting cable entry plates SCG and MC are new type of metal and plastic reinforced cable entry plate made of different types of polymers (TPE and PP-GF).

They meet the requirements of IP55 protection class without the need of any additional gaskets or grommets. This makes it very easy to use and provides many benefits for compact installation unit.

Splitting cable entry plates SCG and MC are suitable for both in- and outdoor application and operating temperature range is from -40 °C to +90 °C.

Look more about materials at Comparison of materials on page 152.



SCG 1x3-35 (IP55)

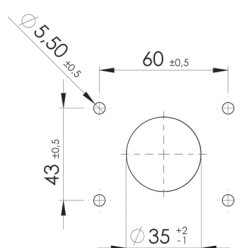
SCG 2x3-35 (IP55)

	SCG 1x3-35 (IP55)	SCG 2x3-35 (IP55)
Black UL 94 V-0	● MBA4N01B11	MBA4N02B11
Technical data		
Service temperature	-40 - +90	-40 - +90
Dimensions (A / B / C) (mm)	77 / 60 / 40	136 / 60 / 40
Number of cables (pcs) x cable diameter (mm)	1 x 3-35	2 x 3-35
Total number of cables	1	2
Mounting hole size	SCG 1	SCG 2
Weight (g)	160	263
Package (pcs)	100	50

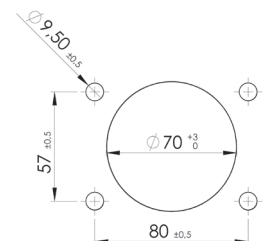
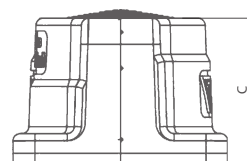
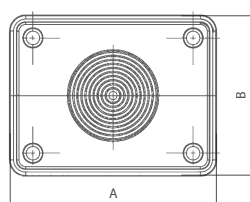
* Only for cables without connectors.

Dimensions

SCG 1



MC 1





MC 1x8-67 (IP55)

MC 2x8-67 (IP55)

MC 2/10 (IP55)

Black UL 94 V-0	●	MBA4N19B11	MBA4N28B11	MBA4N21B11
Black	●	MBA4N18B11	-	-

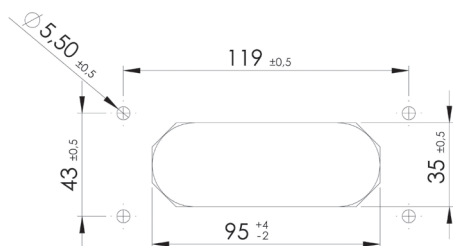
Technical data

Service temperature	-40 - +90	-40 - +90	-40 - +90
Dimensions (A / B / C) (mm)	123 / 93 / 75	222 / 93 / 75	222 / 93 / 75
Number of cables (pcs) x cable diameter (mm)	1 x 8 - 67	2 x 8 - 67	1 x 8 - 67 2 x 8 - 11 2 x 10 - 13 5 x up to 14*
Total number of cables	1	2	10
Mounting hole size	MC 1	MC 2	MC 2
Weight (g)	870	870	680
Package (pcs)	15	10	10

* Only for cables without connector

Dimensions

SCG 2



MC 2

